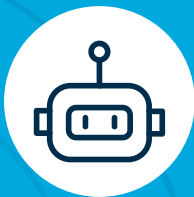
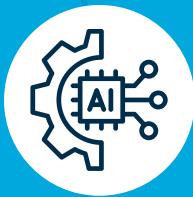


# Administration

The administrative department is a central hub within the company: it connects multiple functions, manages a large amount of information, and ensures operational balance. It often finds itself managing cross-functional processes from different areas. When these are fragmented and not integrated, operations slow down, the workload increases, and the risk of error rises.



**Agentic AI:** autonomous task execution, interaction with complex systems, and continuous adaptation.



**Integrated hyperautomation:** combination of automation, artificial intelligence and AI agentic in a single platform.



**Custom automations:** integration with custom platforms and different infrastructures.

# Administration Automation

## Case Study

### The problem

**Misalignment between insights and governance:** outdated data prevents timely decisions

**Expense report management:** manual compilation and checking increase time and errors

**Document updating and archiving:** entering data into the management system requires repetitive and manual tasks

### Automyo

Our no code platform:

- ✓ Generates summary reports with the hours worked on different projects, ready to use and always up to date
- ✓ Extracts data from documents, enters it into the management system, and initiates the approval process
- ✓ Creates and archives documents, ensuring constant updating, traceability, and no duplication

Management times  
reduced by  
50%

Updated  
and  
traceable  
documents

More  
staff for  
strategic  
functions



Advanced spreadsheet  
management



External software  
integration



Report  
Generation



Inferential analysis  
of data



On-screen data  
scanning



BOT to update  
data

Per maggiori informazioni, visita il nostro sito o contattaci direttamente.