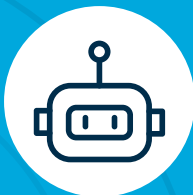


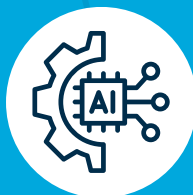


# IT Process Automation

IT departments often manage critical applications, complex orchestrations, and continuous data flows. When systems do not communicate with each other and many tasks remain manual—such as synchronization between platforms—operations slow down, workloads increase, and the risk of error grows.



**Agentic AI:** autonomous task execution, interaction with complex systems, and continuous adaptation.



**Integrated hyperautomation:** combination of automation, artificial intelligence and AI agentic in a single platform.



**Custom automations:** integration with custom platforms and different infrastructures.

# IT Process Automation

## Case Study

### The problem

**Misalignment between systems:** comparing and updating multiple systems increases the risk of error

**Fragmented HR onboarding:** creating accounts on multiple applications involves repetitive tasks

**Ticketing system management:** numerous support requests, which are complex to manage and sort

### Automyo

Our no code platform

- ✓ Interprets data and adapts it to the logic of each application, without duplication or manual intervention.
- ✓ Retrieves personal, role, and department data to create IT accounts with role-based permissions.
- ✓ Detects the opening of new tickets, understands their type, and assigns them to the relevant department.

More  
traceable  
data

Operational  
time  
reduced by  
up to 60%

More  
staff for  
strategic  
functions



Advanced spreadsheet  
management



External software  
integration



Report  
Generation



Inferential analysis  
of data



On-screen data  
scanning



BOT to update  
data